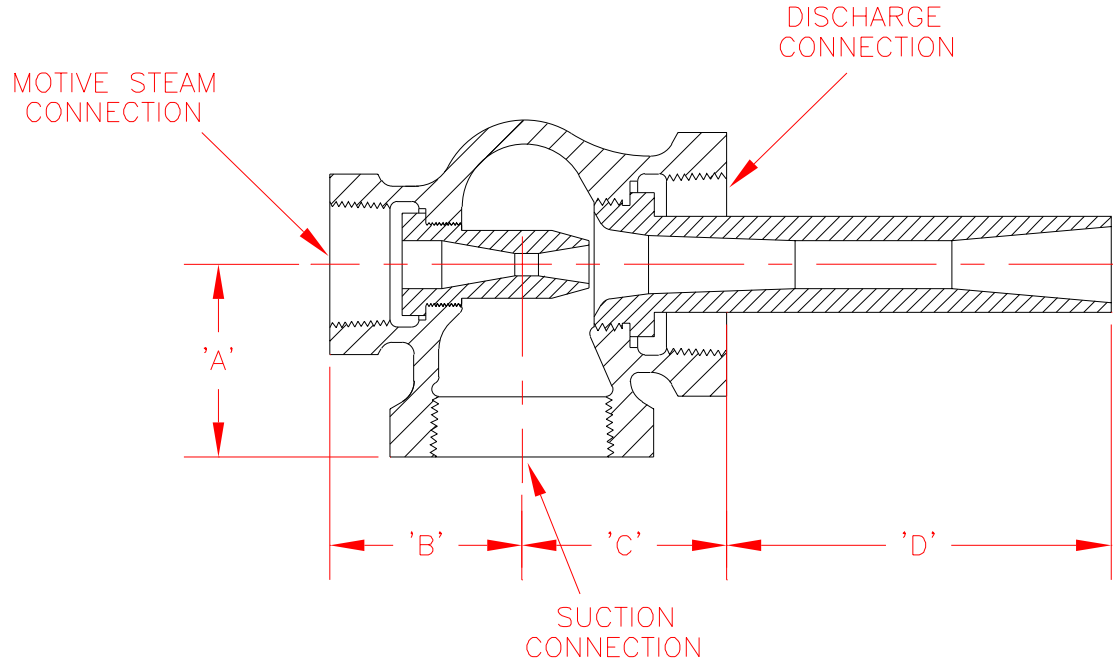


NOTE: NBTGL & NCTGL SIPHONS HAVE THE SAME OPERATING CHARACTERISTICS



| CAPACITY FACTOR | MODEL | DIM. A | DIM. B | DIM. C | DIM. D | PRESSURE CONNECTION | SUCTION & DISCHARGE CONNECTION |
|-----------------|---------|--------|---------|----------|---------|---------------------|--------------------------------|
| 0.027 | NCTGL00 | 1-1/4" | 1-1/4" | 1-1/2" | 1-5/16" | 3/8" NPT | 1/2" NPT |
| 0.050 | NCTGL0 | 1-1/4" | 1-1/4" | 1-1/2" | 2-7/8" | 3/8" NPT | 1/2" NPT |
| 0.091 | NCTGL1 | 1-1/4" | 1-1/4" | 1-1/2" | 1-1/16" | 3/8" NPT | 1/2" NPT |
| 0.165 | NCTGL2 | 1-3/8" | 1-7/16" | 1-1/2" | 1-7/8" | 1/2" NPT | 3/4" NPT |
| 0.30 | NCTGL3 | 1-1/2" | 1-9/16" | 1-11/16" | 2-3/4" | 3/4" NPT | 1" NPT |
| 0.55 | NCTGL4 | 2" | 2" | 2-1/8" | 4-1/16" | 1" NPT | 1-1/2" NPT |
| 1.00 | NCTGL5 | 2" | 2" | 2-1/8" | 5-3/4" | 1" NPT | 1-1/2" NPT |
| 1.80 | NCTGL6 | 2-1/2" | 2-3/8" | 2-3/4" | 7-7/8" | 1-1/2" NPT | 2" NPT |
| 3.24 | NCTGL7 | 3-1/2" | 3-1/8" | 3-3/4" | 10" | 2" NPT | 3" NPT |
| 4.30 | NCTGL8 | 3-1/2" | 3-1/8" | 3-3/4" | 12" | 2" NPT | 3" NPT |
| 5.71 | NCTGL9 | 4-1/2" | 4" | 4-13/16" | 13-5/8" | 3" NPT | 4" NPT |
| 7.57 | NCTGL10 | 4-1/2" | 4" | 4-13/16" | 16-1/8" | 3" NPT | 4" NPT |

DIMENSIONS AND SPECIFICATIONS ARE SUBJECT TO CHANGE WITHOUT NOTICE

| NO. | DATE | REVISION | BY |
|---|------|-----------------|------------------------------------|
| ELMRIDGE TORONTO, ONTARIO CANADA LIVONIA, MICHIGAN USA | | | |
| PROJECT : Gas-Jet Steam Siphons | | | |
| PART : NCTGL Dimensions | | | |
| MATERIAL : | | | QTY.: |
| UNLESS OTHERWISE SPECIFIED, GENERAL TOLERANCES: X/X = ± 1/32" .XX = ± .010 .XXX = ± .002 DEG. = ± 1/2° | | SCALE : None | RELEASE DATE : |
| | | DRAWN BY : B.W. | DATE : 8/4/95 |
| | | APPROVED BY : | DATE : |
| NOTE : | | NCTGL-D | DRAWING NUMBER 981 — A REV.NO. 1.1 |