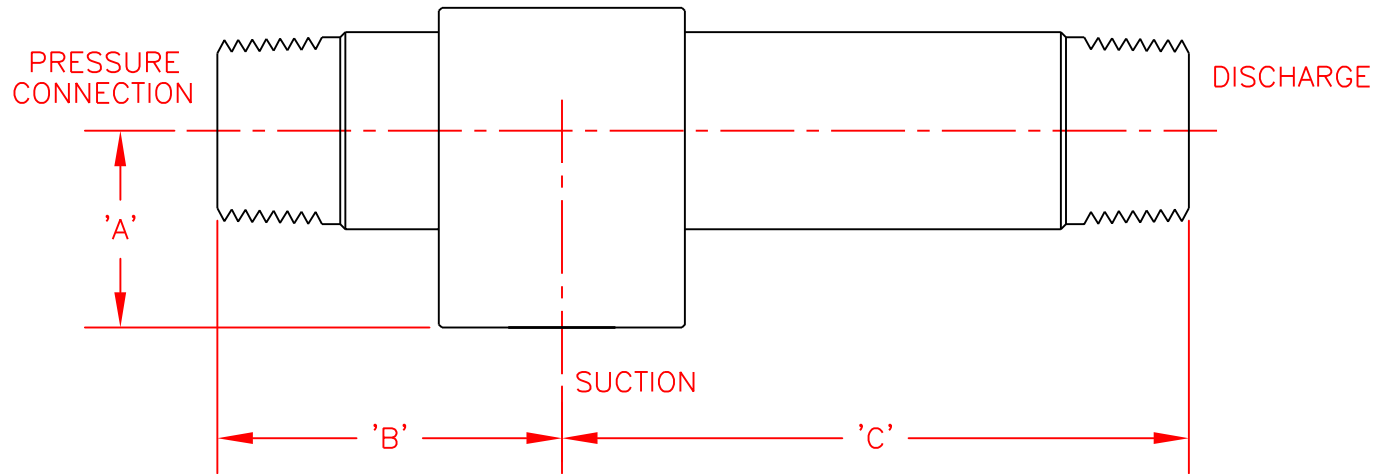


NOTE: NBTLE & NCTLE INFUSERS HAVE THE SAME OPERATING CHARACTERISTICS



| CAPACITY FACTOR | MODEL   | DIM. A | DIM. B  | DIM. C   | SUCTION CONNECTION | PRESSURE & DISCHARGE CONNECTION |
|-----------------|---------|--------|---------|----------|--------------------|---------------------------------|
| 0.027           | NBTLE00 | 1-1/4" | 1-1/2"  | 2-17/32" | 1/4" NPT           | 3/8" NPT                        |
| 0.050           | NBTLE0  | 1-1/4" | 1-1/2"  | 2-25/32" | 1/4" NPT           | 3/8" NPT                        |
| 0.091           | NBTLE1  | 1-1/4" | 1-1/2"  | 3"       | 1/4" NPT           | 1/2" NPT                        |
| 0.165           | NBTLE2  | 1-3/8" | 2"      | 3-7/16"  | 3/8" NPT           | 3/4" NPT                        |
| 0.30            | NBTLE3  | 1-3/4" | 2-5/8"  | 4-1/2"   | 3/8" NPT           | 1" NPT                          |
| 0.55            | NBTLE4  | 2"     | 3"      | 4-3/4"   | 1/2" NPT           | 1-1/2" NPT                      |
| 1.00            | NBTLE5  | 2"     | 3"      | 6-3/8"   | 1/2" NPT           | 1-1/2" NPT                      |
| 1.80            | NBTLE6  | 3"     | 3-1/4"  | 10-7/8"  | 3/4" NPT           | 2" NPT                          |
| 3.24            | NBTLE7  | 3-1/2" | 4-1/4"  | 14-1/2"  | 1" NPT             | 2-1/2" NPT                      |
| 4.30            | NBTLE8  | 4"     | 5"      | 16"      | 1-1/2" NPT         | 3" NPT                          |
| 5.71            | NBTLE9  | 4"     | 5"      | 19-1/8"  | 1-1/2" NPT         | 4" NPT                          |
| 7.57            | NBTLE10 | 5-1/4" | 10-1/2" | 22"      | 1-1/2" NPT         | 4" NPT                          |

PRELIMINARY

DO NOT SCALE

| NO.   | DATE | REVISION   | BY                   |
|---|------|--|----------------------|
|   |      |  |                      |
|   |      | TORONTO, ONTARIO CANADA<br>LIVONIA, MICHIGAN USA |                      |
| PROJECT: <b>Liqui-Jet Infusers</b>  |      |  |                      |
| PART: <b>NBTLE Dimensions - Welded Style</b>  |      |  |                      |
| MATERIAL:   |      |  | QTY.:                |
| <del>UNLESS OTHERWISE SPECIFIED, GENERAL TOLERANCES:</del><br>X/X = ± 1/32"<br>XX = ± .010<br>XXX = ± .002<br>DEG. = ± 1/2° |      | SCALE: <b>None</b>                               | RELEASE DATE:        |
|   |      | DRAWN BY: <b>B.W.</b>                            | DATE: <b>5/15/97</b> |
|   |      | APPROVED BY:                                     | DATE:                |
| NOTE:   |      | DRAWING NUMBER <b>2030 - A</b>                   | REV.NO. <b>1.5</b>   |
| <b>NBTLE-D</b>  |      |  |                      |

DIMENSIONS AND SPECIFICATIONS ARE SUBJECT TO CHANGE WITHOUT NOTICE