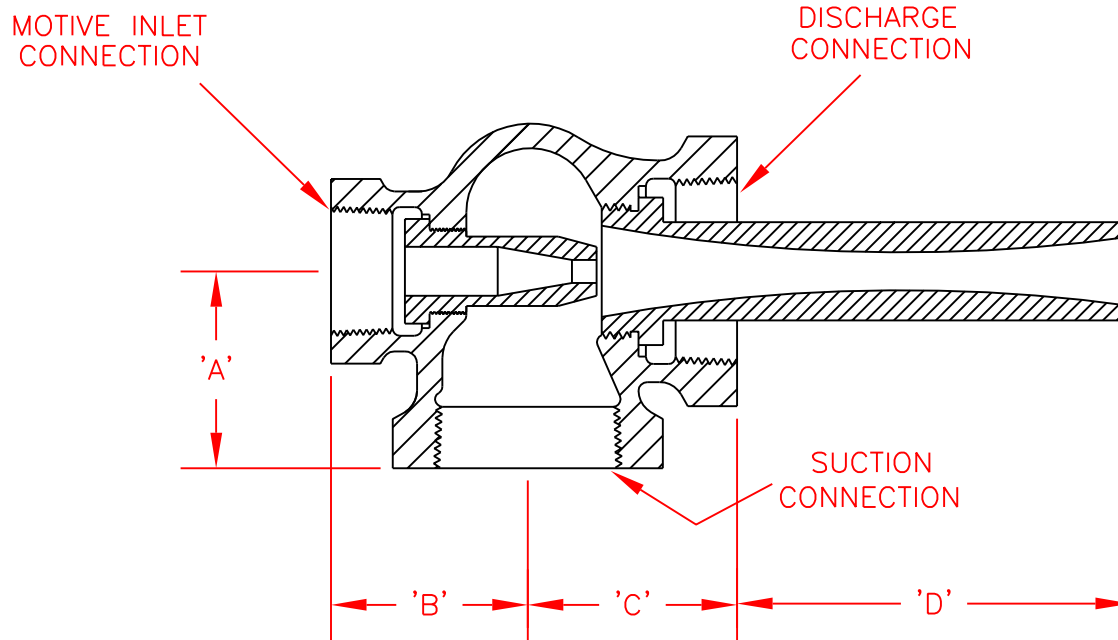



NOTE: NCTLLM & NBTLLM EDUCTORS HAVE THE SAME OPERATING CHARACTERISTICS



CAPACITY FACTOR	MODEL	DIM. A	DIM. B	DIM. C	DIM. D	PRESSURE CONNECTION	SUCTION & DISCHARGE CONNECTION
0.027	NCTLLM00	1-1/4"	1-1/4"	1-1/2"	7/8"	3/8" NPT	1/2" NPT
0.050	NCTLLM0	1-1/4"	1-1/4"	1-1/2"	1-1/8"	3/8" NPT	1/2" NPT
0.091	NCTLLM1	1-1/4"	1-1/4"	1-1/2"	1-1/16"	3/8" NPT	1/2" NPT
0.165	NCTLLM2	1-3/8"	1-7/16"	1-1/2"	1-7/8"	1/2" NPT	3/4" NPT
0.30	NCTLLM3	1-1/2"	1-9/16"	1-11/16"	2-3/4"	3/4" NPT	1" NPT
0.55	NCTLLM4	2"	2"	2-1/8"	4-1/16"	1" NPT	1-1/2" NPT
1.00	NCTLLM5	2"	2"	2-1/8"	5-3/4"	1" NPT	1-1/2" NPT
1.80	NCTLLM6	2-1/2"	2-3/8"	2-3/4"	7-7/8"	1-1/2" NPT	2" NPT
3.24	NCTLLM7	3-1/2"	3-1/8"	3-3/4"	11-1/16"	2" NPT	3" NPT
4.30	NCTLLM8	3-1/2"	3-1/8"	3-3/4"	12"	2" NPT	3" NPT
5.71	NCTLLM9	4-1/2"	4"	4-13/16"	13-5/8"	3" NPT	4" NPT
7.57	NCTLLM10	4-1/2"	4"	4-13/16"	16-1/8"	3" NPT	4" NPT

DIMENSIONS AND SPECIFICATIONS ARE SUBJECT TO CHANGE WITHOUT NOTICE

NO.	DATE	REVISION	BY
 TORONTO, ONTARIO CANADA LIVONIA, MICHIGAN USA			
PROJECT :		Liqui-Jet Eductors	
PART :		NCTLLM Dimensions	
MATERIAL :			QTY.:
UNLESS OTHERWISE SPECIFIED, GENERAL TOLERANCES: X/X = ± 1/32" .XX = ± .010 .XXX = ± .002 DEG. = ± 1/2°		SCALE : NONE	RELEASE DATE :
		DRAWN BY: B.W.	DATE: 1/16/99
		APPROVED BY:	DATE:
NOTE :		DRAWING NUMBER	REV.NO.
NCTLLM-D		1991 - A	1.0